

# Married-Couple and Unmarried-Partner Households: 2000

Issued February 2003

Census 2000 Special Reports

CENSR-5

## Introduction

Census 2000 enumerated 105.5 million households in the United States,<sup>1</sup> of which the majority (52 percent) were maintained by married couples (54.5 million). A reflection of changing life styles is mirrored in Census 2000's enumeration of 5.5 million couples who were living together but who were not married, up from 3.2 million in 1990.<sup>2</sup> These unmarried-partner households were self-identified on the census form as being maintained by people who were sharing living quarters and who also had a close personal relationship with each other.<sup>3</sup> The majority of these unmarried-partner households had partners of the opposite sex (4.9 million) but about 1 in 9 (594,000) had partners of the same sex.<sup>4</sup>

<sup>1</sup> The text of this report discusses data for the United States, including the 50 states and the District of Columbia. Data for the Commonwealth of Puerto Rico are shown in Tables 2, 4, 5, and 6 and Figure 2.

<sup>2</sup> Data on unmarried partners from the 1990 census (which were based on data from the sample form) are not comparable with data from Census 2000 because of changes in the editing procedures. See [www.census.gov/population/www/cen2000/samesex.html](http://www.census.gov/population/www/cen2000/samesex.html) for an explanation of these changes.

<sup>3</sup> In contrast, people who were sharing the same living quarters but were doing so just to share living expenses were offered the opportunity to identify themselves as roommates or housemates.

Figure 1.

## Reproduction of the Question on Relationship to Householder From Census 2000

**2. How is this person related to Person 1? Mark  ONE box.**

<input type="checkbox"/> Husband/wife	If NOT RELATED to Person 1:
<input type="checkbox"/> Natural-born son/daughter	<input type="checkbox"/> Roomer, boarder
<input type="checkbox"/> Adopted son/daughter	<input type="checkbox"/> Housemate, roommate
<input type="checkbox"/> Stepson/stepdaughter	<input type="checkbox"/> Unmarried partner
<input type="checkbox"/> Brother/sister	<input type="checkbox"/> Foster child
<input type="checkbox"/> Father/mother	<input type="checkbox"/> Other nonrelative
<input type="checkbox"/> Grandchild	
<input type="checkbox"/> Parent-in-law	
<input type="checkbox"/> Son-in-law/daughter-in-law	
<input type="checkbox"/> Other relative — <i>Print exact relationship.</i> →	

Source: U.S. Census Bureau, Census 2000 questionnaire.

Of these same-sex unmarried-partner households, 301,000 had male partners and 293,000 had female partners.

This report presents information from Census 2000 on the characteristics of the 60 million households maintained by couples (also called coupled households). These coupled households were assigned

<sup>4</sup> Estimating numbers and characteristics of population groups with low probabilities of occurrence may be affected by even small reporting errors or incorrect optical reading of some questionnaires during data processing. The analysis of the number of same-sex couples and their characteristics may be susceptible to these problems if such errors were made in the relationship and sex items. For instance, if an error was made by the household respondent for the item "What is this person's sex?," an opposite-sex married-couple household could have been erroneously processed as a same-sex married-couple household. In this instance, the household would have most likely been reclassified as a same-sex unmarried-partner household. For a further explanation of the editing process, see [www.census.gov/population/www/cen2000/samesex.html](http://www.census.gov/population/www/cen2000/samesex.html).

By  
Tavia Simmons  
and  
Martin O'Connell

U S C E N S U S B U R E A U

Helping You Make Informed Decisions

U.S. Department of Commerce  
Economics and Statistics Administration  
U.S. CENSUS BUREAU

United States  
Census  
2000

Table 1.  
**Married and Unmarried-Partner Households by Metropolitan Residence Status: 2000**

(For information on confidentiality protection, nonsampling error, and definitions, see [www.census.gov/prod/cen2000/doc/sf1.pdf](http://www.census.gov/prod/cen2000/doc/sf1.pdf))

Household type and sex of householder	Total	In a metropolitan area						Not in a metropolitan area	
		Total		In central city		Not in central city		Number	Percent of all households
		Number	Percent of all households	Number	Percent of all households	Number	Percent of all households		
Total households <sup>1</sup> . . . .	105,480,101	84,304,885	79.9	32,753,918	31.1	51,550,967	48.9	21,175,216	20.1
Total coupled households <sup>2</sup> .	59,969,000	47,214,481	78.7	15,189,744	25.3	32,024,737	53.4	12,754,519	21.3
Married-couple households . . . . .	54,493,232	42,757,993	78.5	13,232,903	24.3	29,525,090	54.2	11,735,239	21.5
Male householder . . . . .	47,449,405	36,968,706	77.9	11,101,326	23.4	25,867,380	54.5	10,480,699	22.1
Female householder . . . .	7,043,827	5,789,287	82.2	2,131,577	30.3	3,657,710	51.9	1,254,540	17.8
Unmarried-partner households . . . . .	5,475,768	4,456,488	81.4	1,956,841	35.7	2,499,647	45.6	1,019,280	18.6
Opposite-sex partners . . .	4,881,377	3,949,743	80.9	1,709,317	35.0	2,240,426	45.9	931,634	19.1
Male householder . . . .	2,615,119	2,083,069	79.7	849,082	32.5	1,233,987	47.2	532,050	20.3
Female householder . . .	2,266,258	1,866,674	82.4	860,235	38.0	1,006,439	44.4	399,584	17.6
Same-sex partners . . . . .	594,391	506,745	85.3	247,524	41.6	259,221	43.6	87,646	14.7
Male householder . . . .	301,026	259,807	86.3	135,546	45.0	124,261	41.3	41,219	13.7
Female householder . . .	293,365	246,938	84.2	111,978	38.2	134,960	46.0	46,427	15.8

<sup>1</sup>Total includes other types of households including family and nonfamily households which do not contain either spouses or unmarried partners.

<sup>2</sup>Coupled households represent the total of married-couple and unmarried-partner households.

Source: U.S. Census Bureau, Census 2000 Summary File 1.

to 1 of 4 mutually exclusive groups, depending on the relationship and gender of the householder and the spouse or partner: opposite-sex married couples, opposite-sex unmarried partners, male same-sex unmarried partners, and female same-sex unmarried partners. The numbers in this report do not show a complete count of all married couples and unmarried partners but only of couples and partners where one person was the householder. If the household included more than one couple, the household designation was determined by the status of the householder. For example, if a household was maintained by an unmarried couple but also contained the son of the householder and the son's wife, the household would be tabulated only as an unmarried-partner household in this report.

The information on household type is derived from the item on the

Census 2000 questionnaire (Figure 1) that asked about the relationship of each person in the household to the person on line 1, the householder (the person in whose name the house was owned or rented). The relationship item, which has been asked on the census since 1880, provides information about both individuals and the make-up of families and households. In 1990, the category "unmarried partner" was added to the relationship item to measure the growing complexity of American households and the tendency for couples to live together before getting married.<sup>5</sup>

<sup>5</sup> For historical estimates of the number of unmarried partners derived from the Census Bureau's Current Population Survey, see [www.census.gov/population/socdemo/hh-fam/tabUC-1.txt](http://www.census.gov/population/socdemo/hh-fam/tabUC-1.txt). For the results of the most recent survey, see Jason Fields and Lynne M. Casper, *America's Families and Living Arrangements: March 2000*. Current Population Reports, P20-537. U.S. Census Bureau, Washington, DC, 2001.

**Unmarried partners are more likely than married couples to live in metropolitan areas.**

Of the 105.5 million households in the United States, 84.3 million were located in metropolitan areas—32.8 million were within central cities and 51.6 million were located in the suburbs<sup>6</sup>—while the remaining 21.2 million were outside metropolitan areas (Table 1). Among the 60 million coupled households, 47.2 million were in metropolitan areas—15.2 million were in central cities and 32.0 million were in the suburbs—while the remaining 12.8 million coupled households were outside metropolitan areas.

Of the four different types of households maintained by couples,

<sup>6</sup> In this report, two terms—suburban areas and suburbs—are used to designate that part of the metropolitan area which is not in the central city.

married-couple households had the lowest rate of metropolitan residence (79 percent), while same-sex unmarried-partner households had the highest rates: 84 percent of female same-sex households and 86 percent of male same-sex households. Opposite-sex unmarried-partner households had an intermediate rate of metropolitan residence (81 percent).

Married-couple households were less likely to be found in central cities (24 percent) than were unmarried-partner households (36 percent). Among unmarried-partner households, opposite-sex partners were less likely to reside in central cities (35 percent) than female same-sex partners (38 percent) or male same-sex partners (45 percent).

Married-couples and opposite-sex unmarried partners with female householders were more likely to be in metropolitan areas (both 82 percent) than were their counterparts with male householders (78 percent and 80 percent, respectively). Gender differences in central city residence were even more apparent: 30 percent and 38 percent for women compared with 23 percent and 33 percent, respectively, for men.<sup>7</sup>

### **About 9 percent of coupled households are unmarried-partner households.**

Nationally, 57 percent of all households in 2000 were coupled households. Table 2 shows that the West and Midwest had the highest proportion (58 percent), while the Northeast had the lowest

<sup>7</sup> On an historical note, the Census Bureau began listing wives as householders in married-couple families in surveys and the census beginning in 1980. Before that time, husbands were automatically designated as the householder in married-couple families. Beginning in 1990 when unmarried-partner households were first identified, either sex could be listed as the householder.

(55 percent).<sup>8</sup> Overall, 9 percent of all coupled households were unmarried-partner households: the West had the highest percentage (10 percent), while the South had the lowest (8 percent).

Opposite-sex partners (4.9 million) constituted the vast majority of the 5.5 million unmarried-partner households. Nationwide, 594,000 same-sex unmarried-partner households represented 1 percent of all coupled households. On a comparative basis, the West had the highest percentage (1.2 percent) and the Midwest had the lowest (0.7 percent). Fifty-one percent of same-sex couples in the South and the West had male partners, compared with 50 percent in the Northeast and 49 percent in the Midwest.

### **The highest proportion of coupled households was in Utah.**

Coupled households were most likely to be found in western states such as Utah (67 percent of households in that state), Idaho (64 percent), and Wyoming (60 percent), and in New England states (New Hampshire at 62 percent, and Vermont and Maine at 60 percent). Two other states, Iowa and Alaska, also had 60 percent of their households maintained by couples. New York had the lowest percentage (52 percent).

<sup>8</sup> There are four regions (Northeast, Midwest, South, and West). The Northeast includes Connecticut, Maine, Massachusetts, New Hampshire, New Jersey, New York, Pennsylvania, Rhode Island, and Vermont. The Midwest includes Illinois, Indiana, Iowa, Kansas, Michigan, Minnesota, Missouri, Nebraska, North Dakota, Ohio, South Dakota, and Wisconsin. The South includes Alabama, Arkansas, Delaware, the District of Columbia, Florida, Georgia, Kentucky, Louisiana, Maryland, Mississippi, North Carolina, Oklahoma, South Carolina, Tennessee, Texas, Virginia, and West Virginia. The West includes Alaska, Arizona, California, Colorado, Hawaii, Idaho, Montana, Nevada, New Mexico, Oregon, Utah, Washington, and Wyoming.

Other states with proportions under 55 percent were Massachusetts, Rhode Island, Louisiana, and Mississippi (54 percent each). In the District of Columbia, 29 percent of all households were coupled.

### **Unmarried-partner households are least frequently found in the central United States.**

The unmarried-partner category identifies people with a close and personal relationship that goes beyond sharing household expenses. People may live together as an unmarried couple for a variety of reasons. For young men and women, it may be a precursor to an impending marriage, while for others it may represent a transitory or trial relationship. For older couples that have been formerly married, it could represent an alternative lifestyle to the one they previously experienced, especially if child bearing and child rearing activities are not anticipated.

Interesting geographic patterns emerge in the proportion of all coupled households maintained by unmarried partners. Figure 2 shows that counties with above-average proportions of unmarried-partner households were concentrated in several areas. One extends from a number of southwestern states up the Pacific coast and into Alaska. A second large cluster runs from New York through New England. Other areas include the Mississippi Valley and southern Florida. In general, the counties in the Great Plains section of the United States, from west Texas northwards, were characterized by below-average proportions of unmarried-partner households. In a previous report,<sup>9</sup> this area was

<sup>9</sup> See Tavia Simmons and Grace O'Neill, *Households and Families: 2000*. Census 2000 Brief, Series C2KBR/01-8. U.S. Census Bureau, Washington, DC, 2001.

Table 2.  
**Married-Couple and Unmarried-Partner Households for the United States, Regions, States, and for Puerto Rico: 2000**

(For information on confidentiality protection, nonsampling error, and definitions, see [www.census.gov/prod/cen2000/doc/sf1.pdf](http://www.census.gov/prod/cen2000/doc/sf1.pdf))

Area	Married-couple and unmarried-partner households											
	Total households	Total coupled households <sup>1</sup>		Married-couple households	Total unmarried-partner households		Opposite-sex unmarried partners		Same-sex unmarried partners			
		Number	Percent of all households		Number	Percent of coupled households	Number	Percent of coupled households	Total		Sex of partners	
									Number	Percent of coupled households	Male partners	Female partners
<b>United States</b> . . . . .	105,480,101	59,969,000	56.9	54,493,232	5,475,768	9.1	4,881,377	8.1	594,391	1.0	301,026	293,365
<b>Region</b>												
Northeast	20,285,622	11,205,641	55.2	10,127,653	1,077,988	9.6	958,742	8.6	119,246	1.1	59,328	59,918
Midwest	24,734,532	14,222,533	57.5	12,963,564	1,258,969	8.9	1,153,219	8.1	105,750	0.7	52,142	53,608
South	38,015,214	21,549,582	56.7	19,740,328	1,809,254	8.4	1,599,512	7.4	209,742	1.0	107,636	102,106
West	22,444,733	12,991,244	57.9	11,661,687	1,329,557	10.2	1,169,904	9.0	159,653	1.2	81,920	77,733
<b>State</b>												
Alabama	1,737,080	965,453	55.6	906,916	58,537	6.1	50,428	5.2	8,109	0.8	3,980	4,129
Alaska	221,600	132,886	60.0	116,318	16,568	12.5	15,388	11.6	1,180	0.9	483	697
Arizona	1,901,327	1,104,499	58.1	986,303	118,196	10.7	105,864	9.6	12,332	1.1	6,278	6,054
Arkansas	1,042,696	606,944	58.2	566,401	40,543	6.7	36,120	6.0	4,423	0.7	2,176	2,247
California	11,502,870	6,560,600	57.0	5,877,084	683,516	10.4	591,378	9.0	92,138	1.4	49,614	42,524
Colorado	1,658,238	949,895	57.3	858,671	91,224	9.6	81,179	8.5	10,045	1.4	4,640	5,405
Connecticut	1,301,670	745,340	57.3	676,467	68,873	9.2	61,487	8.2	7,386	1.0	3,559	3,827
Delaware	298,736	171,434	57.4	153,136	18,298	10.7	16,430	9.6	1,868	1.1	979	889
District of Columbia	248,338	71,517	28.8	56,631	14,886	20.8	11,208	15.7	3,678	5.1	2,693	985
Florida	6,337,929	3,561,888	56.2	3,192,266	369,622	10.4	328,574	9.2	41,048	1.2	22,988	18,060
Georgia	3,006,369	1,694,543	56.4	1,548,800	145,743	8.6	126,455	7.5	19,288	1.1	10,251	9,037
Hawaii	403,240	239,593	59.4	216,077	23,516	9.8	21,127	8.8	2,389	1.0	1,234	1,155
Idaho	469,645	299,075	63.7	276,511	22,564	7.5	20,691	6.9	1,873	0.6	902	971
Illinois	4,591,779	2,573,438	56.0	2,353,892	219,546	8.5	196,659	7.6	22,887	0.9	12,155	10,732
Indiana	2,336,306	1,376,309	58.9	1,251,458	124,851	9.1	114,632	8.3	10,219	0.7	5,054	5,165
Iowa	1,149,276	690,076	60.0	633,254	56,822	8.2	53,124	7.7	3,698	0.5	1,789	1,909
Kansas	1,037,891	610,223	58.8	567,924	42,299	6.9	38,326	6.3	3,973	0.7	1,888	2,085
Kentucky	1,590,647	929,210	58.4	857,944	71,266	7.7	64,152	6.9	7,114	0.8	3,310	3,804
Louisiana	1,656,053	893,061	53.9	809,498	83,563	9.4	74,755	8.4	8,808	1.0	4,180	4,628
Maine	518,200	310,033	59.8	272,152	37,881	12.2	34,487	11.1	3,394	1.1	1,493	1,901
Maryland	1,980,859	1,104,884	55.8	994,549	110,335	10.0	99,092	9.0	11,243	1.0	5,230	6,013
Massachusetts	2,443,580	1,328,836	54.4	1,197,917	130,919	9.9	113,820	8.6	17,099	1.3	7,943	9,156
Michigan	3,785,661	2,149,930	56.8	1,947,710	202,220	9.4	186,852	8.7	15,368	0.7	7,293	8,075
Minnesota	1,895,127	1,118,603	59.0	1,018,245	100,358	9.0	91,211	8.2	9,147	0.8	4,290	4,857
Mississippi	1,046,434	567,582	54.2	520,844	46,738	8.2	41,964	7.4	4,774	0.8	2,251	2,523
Missouri	2,194,594	1,251,876	57.0	1,140,866	111,010	8.9	101,582	8.1	9,428	0.8	4,684	4,744
Montana	358,667	210,008	58.6	192,067	17,941	8.5	16,723	8.0	1,218	0.6	554	664
Nebraska	666,184	390,533	58.6	360,996	29,537	7.6	27,205	7.0	2,332	0.6	1,112	1,220
Nevada	751,165	427,103	56.9	373,201	53,902	12.6	48,929	11.5	4,973	1.2	2,739	2,234
New Hampshire	474,606	294,998	62.2	262,438	32,560	11.0	29,857	10.1	2,703	0.9	1,156	1,547
New Jersey	3,064,645	1,789,640	58.4	1,638,322	151,318	8.5	134,714	7.5	16,604	0.9	8,257	8,347
New Mexico	677,971	385,360	56.8	341,818	43,542	11.3	39,046	10.1	4,496	1.2	1,901	2,595
New York	7,056,860	3,667,070	52.0	3,289,514	377,556	10.3	331,066	9.0	46,490	1.3	24,494	21,996
North Carolina	3,132,013	1,789,026	57.1	1,645,346	143,680	8.0	127,482	7.1	16,198	0.9	7,849	8,349
North Dakota	257,152	148,812	57.9	137,433	11,379	7.6	10,676	7.2	703	0.5	360	343
Ohio	4,445,773	2,514,887	56.6	2,285,798	229,089	9.1	210,152	8.4	18,937	0.8	9,266	9,671
Oklahoma	1,342,293	770,918	57.4	717,611	53,307	6.9	47,544	6.2	5,763	0.7	2,811	2,952
Oregon	1,333,723	777,166	58.3	692,532	84,634	10.9	75,702	9.7	8,932	1.1	3,846	5,086
Pennsylvania	4,777,003	2,705,295	56.6	2,467,673	237,622	8.8	216,456	8.0	21,166	0.8	10,492	10,674
Rhode Island	408,424	219,937	53.9	196,757	23,180	10.5	20,709	9.4	2,471	1.1	1,172	1,299
South Carolina	1,533,854	853,564	55.6	783,142	70,422	8.3	62,813	7.4	7,609	0.9	3,561	4,048
South Dakota	290,245	171,282	59.0	157,391	13,891	8.1	13,065	7.6	826	0.5	389	437
Tennessee	2,232,905	1,267,908	56.8	1,173,960	93,948	7.4	83,759	6.6	10,189	0.8	5,090	5,099
Texas	7,393,354	4,316,987	58.4	3,989,741	327,246	7.6	284,334	6.6	42,912	1.0	21,740	21,172
Utah	701,281	467,035	66.6	442,931	24,104	5.2	20,734	4.4	3,370	0.7	1,665	1,705
Vermont	240,634	144,492	60.0	126,413	18,079	12.5	16,146	11.2	1,933	1.3	762	1,171
Virginia	2,699,173	1,552,409	57.5	1,426,044	126,365	8.1	112,563	7.3	13,802	0.9	7,053	6,749
Washington	2,271,398	1,321,464	58.2	1,181,995	139,469	10.6	123,569	9.4	15,900	1.2	7,652	8,248
West Virginia	736,481	432,254	58.7	397,499	34,755	8.0	31,839	7.4	2,916	0.7	1,494	1,422
Wisconsin	2,084,544	1,226,564	58.8	1,108,597	117,967	9.6	109,735	8.9	8,232	0.7	3,862	4,370
Wyoming	193,608	116,560	60.2	106,179	10,381	8.9	9,574	8.2	807	0.7	412	395
<b>Puerto Rico</b> . . . . .	1,261,325	723,042	57.3	682,804	40,238	5.6	33,420	4.6	6,818	0.9	3,122	3,696

<sup>1</sup>Coupled households represent total of married-couple and unmarried-partner households.

Source: U.S. Census Bureau, Census 2000 Summary File 1.



**Figure 2.**  
**Percentage of Unmarried-Partner Households: 2000**

(Percent based on all coupled households. For information on confidentiality protection, nonsampling error, and definitions, see [www.census.gov/prod/cen2000/doc/sf1.pdf](http://www.census.gov/prod/cen2000/doc/sf1.pdf))

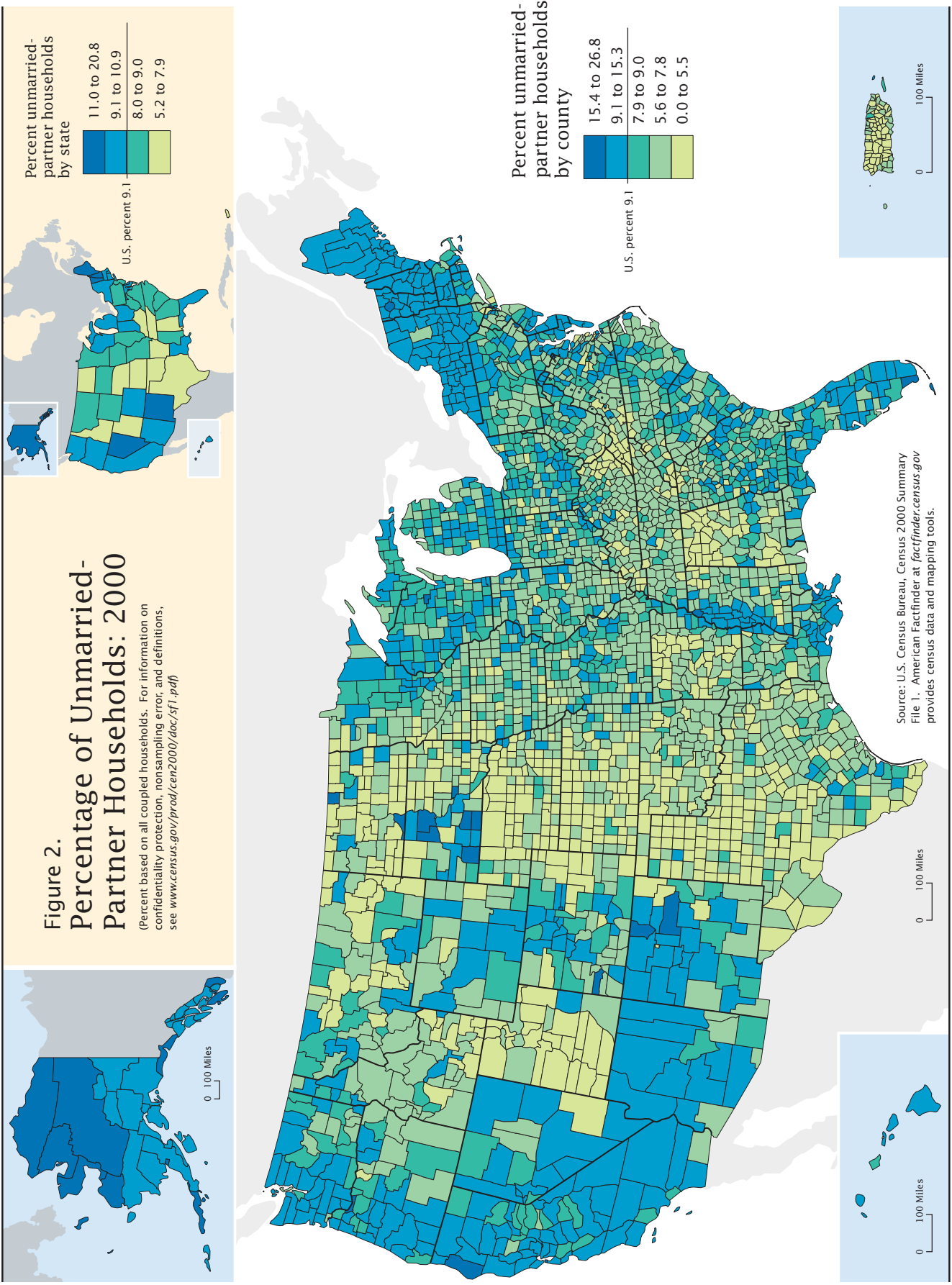
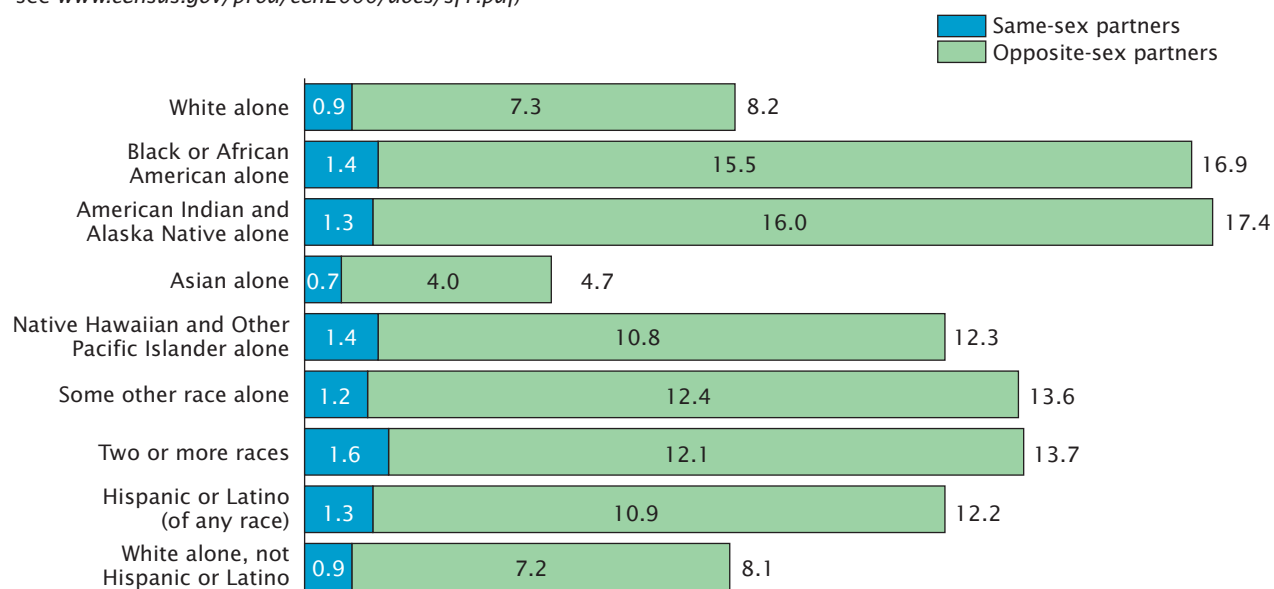


Figure 3.

### Unmarried-Partner Households by Sex of Partners and Race and Hispanic Origin of Householder: 2000

(Percent of all coupled households. For information on confidentiality protection, nonsampling error and definitions, see [www.census.gov/prod/cen2000/docs/sf1.pdf](http://www.census.gov/prod/cen2000/docs/sf1.pdf))



Note: Percent same-sex partners and percent opposite-sex partners may not add to total percent unmarried-partner households because of rounding.

Source: U.S. Census Bureau, Census 2000 Summary File 2.

found to have above-average proportions of households consisting of married couples.

Compared with a nationwide ratio of 1 in 11, approximately 1 out of every 8 coupled households in Nevada, Alaska, Vermont, and Maine was an unmarried-partner household. In the District of Columbia, the ratio was 1 out of 5. States with the lowest percentages of unmarried-partner households included Utah (5 percent) and Alabama (6 percent). Puerto Rico also had a low percentage of unmarried-partner households (6 percent).

Since marriage patterns and living arrangements differ by racial and ethnic groups, geographic patterns

of the proportions of unmarried-partner households may emerge if an area has a high proportion of a specific population group. For example, Figure 2 shows that although the majority of counties in the Great Plains had below-average proportions of unmarried-partner households, high proportions were recorded for several counties in South Dakota that are geographically coincidental with American Indian reservations.<sup>10</sup> Similarly, above-average proportions of unmarried couples were found in the

<sup>10</sup> A visual representation of the population by race and ethnicity at the county level can be found in Cynthia A. Brewer and Trudy A. Suchan, *Mapping Census 2000: The Geography of U.S. Diversity*. Census Special Reports, Series CENSR/01-1. U.S. Census Bureau, Washington, DC, 2001.

Mississippi Valley, where above-average proportions of the population reported a single race of Black.<sup>11</sup>

Figure 3 illustrates the wide range of differences in the proportion of unmarried-partner households to all coupled households by race and

<sup>11</sup> Census 2000 allowed respondents to choose more than one race. In this report, the "alone" category refers to people who indicated one race among the six primary categories: White, Black or African American, American Indian and Alaska Native, Asian, Native Hawaiian or Other Pacific Islander, and Some other race. The "alone" category is used for all of the racial groups in this report except for the Two or more race category. The use of the alone population in this section does not imply that it is the preferred method of presenting or analyzing data. In general, either the alone population or the alone or in combination population can be used, depending on the purpose of the analysis. The Census Bureau uses both approaches.

ethnicity.<sup>12</sup> In 2000, about 17 percent of coupled households for those reporting a single race of American Indian and Alaska Native or of Black were unmarried-partner households. The Hispanic<sup>13</sup> population, which is concentrated in the southwest and California, also recorded above-average proportions of unmarried-partner households (12 percent). However, none of these groups is particularly concentrated in the Pacific Northwest or the New England states, which also have high proportions of unmarried-partner households, suggesting that explanations must be found elsewhere. The lowest proportion shown in Figure 3 was for those reporting a single race of Asian (5 percent).

**California contained 1 out of every 8 unmarried-partner households in the country.**

California, which had 11 percent of all households, had more unmarried-partner households than any other state: 684,000, or 12 percent of the 5.5 million total. Of these, 591,000 were opposite-sex and 92,000 were same-sex couples, representing 12 percent and 16 percent, respectively, of these types of households in the nation. The majority (54 percent) of the same-sex couples in California had male partners.

<sup>12</sup> Because Hispanics may be of any race, data in this report for Hispanics overlap with data for racial groups. Based on Census 2000 100 percent data, the proportion Hispanic was 8.0 percent for the White alone population, 2.0 percent for the Black alone population, 16.4 percent for the American Indian and Alaska Native alone population, 1.2 percent for the Asian alone population, 11.4 percent for the Native Hawaiian and Other Pacific Islander alone population, 97.0 percent for the Some other race alone population, and 32.6 percent for the Two or more races population.

<sup>13</sup> The terms “Hispanic” and “Latino” may be used interchangeably to reflect the new terminology in the standards issued by the Office of Management and Budget in 1997 that are to be implemented by January 1, 2003.

States which had the highest percentage of opposite-sex unmarried partners of all coupled households were Alaska (12 percent), followed by Maine, Vermont, and Nevada (11 percent each). States, which had the lowest percentage were Utah (4.4 percent) and Alabama (5.2 percent).

Among the states, the highest percentage of same-sex unmarried partners of all coupled households was in California, with 1.4 percent, closely followed by Massachusetts, Vermont, and New York, with 1.3 percent. The lowest proportion was found in Iowa, South Dakota, and North Dakota (0.5 percent). The District of Columbia recorded relatively high percentages for both types of unmarried-partner households: 16 percent of its coupled households were composed of opposite-sex partners and 5 percent of same-sex partners.

Nationally, 51 percent of the same-sex couples had male partners. States that had the lowest proportions included Vermont (39 percent) and Alaska (41 percent). Other states under the 45-percent level were geographically dispersed from New Hampshire (43 percent) and Maine (44 percent) in New England, to New Mexico (42 percent) in the Southwest and Oregon (43 percent) in the Pacific Northwest. Only two states had higher proportions of male partners than California (54 percent)—Florida (56 percent) and Nevada (55 percent). Seventy-three percent of the same-sex couples in the District of Columbia had male partners.

**Married-couple households are often found in rapidly growing suburban communities.**

Table 3 shows that, as a percentage of all types of households in

an area, the ten places with the highest percentage of married-couple households were most likely to be found in rapidly growing areas outside of large cities, such as Gilbert, Arizona, which is near Phoenix; Naperville, Illinois, which is outside of Chicago; and Plano, Texas, which is close to Dallas.<sup>14</sup> Five of the ten highest-ranked places were in California. These findings are consistent with overall national statistics that show that the majority of married-couple households were in suburban areas of the United States (Table 1).

The three places with the highest percentage of households with opposite-sex unmarried partners were in the older industrial areas of the Northeast: Paterson, New Jersey; Manchester, New Hampshire; and Rochester, New York. However, two rapidly growing places in Nevada (Sunrise Manor and Spring Valley) also made the list.

In contrast, the highest percentage of households with same-sex unmarried partners were found in larger coastal cities such as San Francisco, California; Ft. Lauderdale, Florida; and Seattle, Washington. Four of these top ten places are in California, while only one is located in the Midwest (Minneapolis, Minnesota).

<sup>14</sup> Gilbert, Arizona, was the fastest growing city between 1990 and 2000 of cities with 100,000 or more people in 2000. Two other cities in Table 3 were also ranked among the top ten fastest growing: Plano, Texas (number 8) and Corona, California (number 9). Naperville, Illinois, along with Fontana, California, and Laredo, Texas, were also in the top 20 fastest growing cities. See U.S. Census Bureau, *County and City Data Book: 2000*. U.S. Census Bureau, Washington, DC, 2002, Table C-1, for a list of these cities.

Table 3.  
**Ten Places of 100,000 or More Population With the Highest Percentage of Married-Couple and Unmarried-Partner Households: 2000**

(For information on confidentiality protection, nonsampling error, and definitions, see [www.census.gov/prod/cen2000/doc/sf1.pdf](http://www.census.gov/prod/cen2000/doc/sf1.pdf))

Types of household and area	Total households, all types	Specified type of household	
		Number	Percent of all households
<b>MARRIED-COUPLE HOUSEHOLD</b>			
Gilbert, AZ .....	35,405	24,613	69.5
Naperville, IL .....	43,751	30,256	69.2
Plano, TX .....	80,875	52,029	64.3
Simi Valley, CA .....	36,421	23,258	63.9
Corona, CA .....	37,839	24,156	63.8
Livonia, MI .....	38,089	23,938	62.8
Fremont, CA .....	68,237	42,757	62.7
Fontana, CA .....	34,014	21,273	62.5
Thousand Oaks, CA .....	41,793	26,063	62.4
Laredo, TX .....	46,852	29,054	62.0
<b>UNMARRIED-PARTNER HOUSEHOLD</b>			
<b>Opposite-sex partners</b>			
Paterson, NJ .....	44,710	3,602	8.1
Manchester, NH .....	44,247	3,498	7.9
Rochester, NY .....	88,999	6,817	7.7
Sunrise Manor, NV* .....	53,745	4,071	7.6
Allentown, PA .....	42,032	3,139	7.5
San Bernardino, CA .....	56,330	4,193	7.4
Spring Valley, NV* .....	47,965	3,546	7.4
Hartford, CT .....	44,986	3,320	7.4
Lansing, MI .....	49,505	3,630	7.3
Green Bay, WI .....	41,591	3,040	7.3
<b>Same-sex partners</b>			
San Francisco, CA .....	329,700	8,902	2.7
Fort Lauderdale, FL .....	68,468	1,418	2.1
Seattle, WA .....	258,499	4,965	1.9
Oakland, CA .....	150,790	2,650	1.8
Berkeley, CA .....	44,955	788	1.8
Atlanta, GA .....	168,147	2,833	1.7
Minneapolis, MN .....	162,352	2,622	1.6
Washington, DC .....	248,338	3,678	1.5
Long Beach, CA .....	163,088	2,266	1.4
Portland, OR .....	223,737	3,017	1.3

\*Sunrise Manor, NV, and Spring Valley, NV, are census designated places and are not legally incorporated.

Note: Census 2000 shows 245 places in the United States with 100,000 or more population. They include 238 incorporated places (including 4 city-county consolidations) and 7 census designated places (CDPs) that are not legally incorporated. For a list of these places by states, see [www.census.gov/population/www/cen2000/phc-t6/tab04.pdf](http://www.census.gov/population/www/cen2000/phc-t6/tab04.pdf).

Source: U.S. Census Bureau, Census 2000 Summary File 1.

### Female householders are found most frequently in the Northeast.

Research has shown that opposite-sex unmarried partners tend to share household activities more equally than married couples.<sup>15</sup>

<sup>15</sup> For a discussion of the changing roles of spouses and partners in married-couple and unmarried-partner households, see Lynne M. Casper and Suzanne M. Bianchi, *Continuity and Change in the American Family* (Sage Publications: Thousand Oaks, CA, 2002), Chapter 2.

This role-sharing behavior may also be reflected in the decision of whom to designate as the householder—the man or the woman. These differences in householder designation are revealed in Table 4—only 13 percent of married-couple households had a female householder, but nearly half (46 percent) of all opposite-sex unmarried-partner households did. Regionally, the Northeast had the highest and the Midwest had the

lowest percentage of householders who were women for married-couples (15 percent and 11 percent, respectively), while the Northeast had the highest percentage and the West had the lowest for unmarried-partner households (48 percent and 45 percent, respectively).

The highest percentage of married-couple households with female householders was recorded in New



Table 4.

### Selected Household and Family Characteristics of Married-Couple and Unmarried-Partner Households for the United States, Regions, States, and for Puerto Rico: 2000

(For information on confidentiality protection, nonsampling error, and definitions, see [www.census.gov/prod/cen2000/doc/sf1.pdf](http://www.census.gov/prod/cen2000/doc/sf1.pdf))

Area	Percent of householders female		Percent of households with children under 18 years						
	Married-couple households	Opposite-sex unmarried-partner households	Married-couple households <sup>1</sup>	Unmarried-partner households					
				Opposite-sex partners		Male partners		Female partners	
				Own children <sup>1</sup>	Own and/or unrelated children <sup>2</sup>	Own children <sup>1</sup>	Own and/or unrelated children <sup>2</sup>	Own children <sup>1</sup>	Own and/or unrelated children <sup>2</sup>
<b>United States</b>	12.9	46.4	45.6	38.9	43.1	21.8	22.3	32.7	34.3
<b>Region</b>									
Northeast	15.4	48.4	45.2	37.4	40.9	21.3	21.7	31.2	32.6
Midwest	11.1	45.8	45.1	38.7	43.9	22.3	22.9	32.8	34.7
South	12.6	46.7	44.4	39.7	44.0	22.1	23.9	34.4	36.1
West	13.4	45.0	48.5	39.2	42.7	20.6	21.1	31.5	33.1
<b>State</b>									
Alabama	11.7	48.2	43.1	41.6	46.1	27.8	28.3	36.8	38.1
Alaska	15.0	43.8	54.4	40.6	45.1	36.2	37.1	37.0	38.6
Arizona	12.7	44.6	43.5	40.5	44.3	22.5	23.0	33.1	35.0
Arkansas	9.9	44.4	41.9	41.8	47.6	26.1	26.7	36.2	38.2
California	14.0	45.3	50.9	41.4	44.4	19.6	20.2	32.8	34.3
Colorado	13.8	45.7	47.2	31.3	34.6	19.9	20.5	26.1	27.8
Connecticut	17.2	50.7	45.4	35.6	38.7	21.9	22.2	30.2	31.6
Delaware	14.5	48.6	42.8	39.9	44.1	18.4	18.9	29.4	31.8
District of Columbia	24.9	56.6	36.6	31.8	32.8	4.8	5.0	23.4	24.5
Florida	14.4	46.5	38.1	35.5	39.2	17.4	17.8	29.3	31.0
Georgia	14.1	48.9	47.3	42.2	46.1	21.1	21.6	34.4	36.2
Hawaii	13.9	45.2	44.8	35.8	39.0	20.7	21.3	30.6	32.6
Idaho	10.0	42.3	47.8	37.6	43.0	30.3	30.8	35.7	37.9
Illinois	11.9	46.2	47.3	38.3	42.5	23.5	24.0	35.6	37.0
Indiana	10.3	44.0	44.4	40.5	47.0	22.8	23.5	33.6	36.3
Iowa	10.0	44.6	43.4	37.5	43.0	24.9	25.4	33.8	35.5
Kansas	10.1	44.8	45.9	39.1	44.1	28.3	29.0	36.5	38.1
Kentucky	11.4	46.1	43.7	40.1	46.0	23.5	24.4	33.0	34.9
Louisiana	12.1	47.7	46.2	44.4	48.5	25.9	26.3	38.5	39.8
Maine	15.1	45.2	41.4	35.7	40.9	18.7	19.0	25.2	27.1
Maryland	15.0	49.5	46.4	38.1	42.1	23.3	24.0	31.7	33.3
Massachusetts	16.6	49.8	45.8	32.8	35.9	18.1	18.6	27.7	29.0
Michigan	11.3	46.9	44.8	40.1	45.3	22.8	23.6	33.2	35.3
Minnesota	11.4	45.7	46.9	35.4	40.2	17.2	17.9	26.8	28.5
Mississippi	12.2	48.9	45.0	49.2	53.4	30.7	31.1	42.0	43.8
Missouri	10.3	45.5	43.6	39.9	45.7	20.9	21.5	31.7	33.7
Montana	11.7	44.0	42.9	35.1	39.3	28.7	29.6	34.2	35.5
Nebraska	9.8	44.6	45.9	36.4	41.5	24.7	25.7	32.7	34.4
Nevada	13.9	41.9	44.5	36.1	40.2	24.7	25.3	35.4	37.5
New Hampshire	15.3	43.7	45.9	33.0	38.1	22.3	22.9	27.2	29.0
New Jersey	14.7	48.0	47.4	38.1	40.9	25.4	25.8	33.6	34.7
New Mexico	12.0	44.2	46.1	48.4	51.7	27.4	27.9	31.0	32.2
New York	17.5	50.1	46.4	39.2	42.2	21.3	21.7	33.1	34.3
North Carolina	12.3	46.1	43.0	38.4	42.9	25.2	25.9	33.3	34.7
North Dakota	8.8	43.0	45.1	36.9	41.5	21.4	21.7	34.4	34.7
Ohio	12.4	46.9	43.6	40.2	45.3	20.9	21.6	31.8	34.0
Oklahoma	10.6	45.1	43.4	42.1	47.2	26.7	27.3	35.0	36.9
Oregon	13.7	45.6	42.8	33.9	38.4	18.9	19.5	26.3	28.1
Pennsylvania	11.6	45.6	42.3	38.5	42.8	20.9	21.3	31.5	33.2
Rhode Island	16.6	50.4	43.6	37.1	40.1	20.5	20.6	27.3	28.6
South Carolina	14.2	47.8	42.6	41.9	45.7	26.8	27.2	37.1	38.8
South Dakota	9.9	44.2	45.2	42.1	47.4	33.2	33.9	41.4	42.3
Tennessee	11.3	46.3	42.5	39.1	44.3	23.9	24.7	33.4	35.4
Texas	11.5	45.2	50.2	42.9	46.8	26.7	27.3	39.2	40.9
Utah	8.9	41.9	55.5	42.2	47.2	29.7	30.2	40.6	42.3
Vermont	16.5	46.2	44.2	33.8	38.3	19.9	20.6	26.7	28.9
Virginia	12.6	46.5	45.3	35.0	39.6	19.8	20.3	31.2	32.7
Washington	13.3	45.9	45.8	35.1	39.7	18.1	18.6	26.7	28.2
West Virginia	9.9	43.7	39.5	40.2	45.6	27.6	27.9	34.9	36.4
Wisconsin	10.5	45.4	44.5	34.9	40.5	21.7	22.4	30.6	32.4
Wyoming	10.9	41.2	44.3	36.0	41.8	28.2	29.9	35.7	37.5
<b>Puerto Rico</b>	14.1	54.4	49.4	56.5	56.7	39.2	39.2	42.2	42.5

<sup>1</sup>Refers to own sons/daughters of the householder.

<sup>2</sup>Refers to own sons/daughters of the householder and other children not related to the householder.

Source: U.S. Census Bureau, Census 2000 Summary File 1; and Census 2000, special tabulation.

York (18 percent). In all the states in New England, at least 15 percent of married couples had female householders. Only two states, North Dakota and Utah, had less than 9 percent. In the District of Columbia, one-quarter of married couples had female householders.

In Connecticut, 51 percent of opposite-sex unmarried partners had female householders, followed by New York (50 percent). The state with the lowest percentage was Wyoming (41 percent). The District of Columbia (57 percent) and Puerto Rico (54 percent) also had a relatively high percentage.

### **Almost one-half of married-couple households include children under 18 years.**

Nationally, 46 percent of married-couple households had at least one son or daughter living in the household (defined as an “own child” of the householder).<sup>16</sup> The West had the highest percentage with children (49 percent), while the South had the lowest (44 percent). Four states had at least 50 percent: Utah (56 percent), Alaska (54 percent), California (51 percent), and Texas (50 percent). The state with the lowest percentage was Florida (38 percent), likely a reflection of its older age distribution.

### **Four out of ten opposite-sex unmarried-partner households have children present.**

The identification of the partner’s own children in an unmarried-partner household is complicated when the child of the partner is not the biological child of the householder, because the Census

<sup>16</sup> In this report, an “own child” of the householder includes any child under the age of 18 who is a biological, adopted, or stepchild of the householder.

2000 questionnaire recorded only each person’s relationship to the householder. In circumstances where the child of the partner was not related to the householder, an actual family unit may not be identified in the tabulation. To address this issue, Table 4 includes data that attempt to capture the presence of the partners’ children in unmarried-partner households.

Using this expanded child-defined universe, the percentage of children present in opposite-sex unmarried-partner households increases from 39 percent—counting only own children—to 43 percent—including both own and/or unrelated children under 18. Similar but smaller increases of 1 or 2 percentage points are noted for same-sex couples.

### **The South had the highest percentage of opposite-sex unmarried-partner households with their own children.**

Among opposite-sex unmarried-partner households, the South had the highest percentage with their own children (40 percent), while the Northeast had the lowest (37 percent). Among the states, Colorado had the lowest percentage (31 percent), while Mississippi had the highest (49 percent).

Although married-couple households were more likely to contain own children of the householder than were opposite-sex unmarried-partner households, households in three states (Mississippi, New Mexico, and West Virginia) were more likely to contain their own children in unmarried-partner households. In Puerto Rico, 57 percent of all opposite-sex unmarried-partner households contained own children of the householder, 7 percentage points more

than for married-couple households.<sup>17</sup>

### **One-third of female partner households and one-fifth of male partner households contain children.**

Nationally, 33 percent of female same-sex householders were living with their sons and daughters under 18 years old.<sup>18</sup> The South had the highest percentage with own children under 18 years of age (34 percent), while the Northeast had the lowest (31 percent). In three states, 40 percent or more of these households had at least one own child living in the household (Mississippi, South Dakota, and Utah).

Overall, 22 percent of male same-sex householders had their own children present in the household. The percentage with own children ranged from 17 percent in Florida and Minnesota to 36 percent in Alaska. Other states where 30 percent or more of male same-sex households had own children present were South Dakota (33 percent), Mississippi (31 percent), and Idaho and Utah (30 percent each).

<sup>17</sup> In 2000, both Mississippi and New Mexico had the highest percentage of children born out of wedlock of all states (46 percent, compared with the national average of 33 percent), while the corresponding percentage for Puerto Rico was 50 percent. This could possibly account for the relatively high proportions of unmarried-partner households with children in these states. See Joyce A. Martin, et al., *Births: Final Data for 2000. National Vital Statistics Reports*, Vol. 50, No. 5. National Center for Health Statistics, Hyattsville, MD, 2002, Table 19.

<sup>18</sup> The proportions of same-sex unmarried-partner households with children shown in this report may be too high because of the possible inclusion of opposite-sex couples who had erred in marking their sex on the questionnaire or by incorrect optical reading of some questionnaires during data processing. However, research has indicated that sex was reported with extremely high consistency levels when subsequent reinterviews were made.

What circumstances may influence inter-state variations in the presence of children in same-sex unmarried-partner households? Factors could include not only geographical differences in fertility patterns of previously married partners before they entered a same-sex relationship, but also state laws related to child custody placements in cases of marital dissolution—which determine who retains custody of the child—and to adoption by same-sex couples.

Data from Census 2000 illustrate the variety of living arrangements of households with children: while the vast majority of households containing own children were married-couple households (24.8 million), over 2 million households included own children whose parents were living in nontraditional arrangements (1.9 million opposite-sex unmarried partners, 96,000 female partners, and 66,000 male partners).

### **Interracial couples are most prevalent in the West.**

Nationally, in 6 percent of married-couple households, the household-er and the spouse were of different races (Table 5).<sup>19</sup> Three to five percent of married couples in the Midwest, the Northeast, and the South had spouses of different races, compared with 11 percent in the West. The highest proportion was found in Hawaii (35 percent), followed by Alaska and Oklahoma (about 15 percent). Because these

states have high proportions of native populations (for example, Native Hawaiian and Other Pacific Islanders, and American Indian and Alaska Natives, respectively), these states may have a greater potential for the likelihood of inter-marriage.

Unmarried-partner households consistently had higher percentages of partners of different races at the national and regional levels, and in individual states than did married-couple households.<sup>20</sup> Nationally, these percentages ranged from 10 percent for female unmarried partners to 12 percent for opposite-sex unmarried partners.

For opposite-sex unmarried-partner households, the West recorded the highest percentage of mixed-race partnerships (19 percent), and the Midwest the lowest (9 percent). Over one-half (56 percent) of these households in Hawaii had partners of different races, followed by Alaska (26 percent) and Oklahoma (25 percent).

The New England states of Maine, New Hampshire, and Vermont, which have very high proportions of people who reported the single race of White, had the lowest proportions of different race partnerships for all four household types (around 5 percent or less). Two other states (Mississippi and West Virginia) also had comparatively low percentages for all four household types.

### **Three percent of married-couple households have one Hispanic and one non-Hispanic partner.**

Nationally, 3 percent of married couples had only one Hispanic partner and the other partner not of Hispanic origin, compared with about 6 percent of unmarried partners (Table 5). Similar to the geographic pattern noted for interracial partners, the highest percentages of Hispanic/non-Hispanic partner households for all four types of households were found in the West. The West also had the highest portion of Hispanics (24 percent) in its total population.<sup>21</sup> New Mexico had the highest percentage of households having only one Hispanic partner, more than 10 percent for each household type. West Virginia had the lowest proportions, with 1 percent or less for each household type.

The last four columns of Table 5 present the data for the 14 possible race/Hispanic-origin combinations, which generate 196 possible combinations per couple.<sup>22</sup> Overall, 7 percent of married couples had spouses of a different race or origin. Percentages for opposite-sex and male same-sex households were about 15 percent, compared with 13 percent for female same-sex households. Couples in Hawaii experienced the greatest diversity: the percentages of partners of a different race or origin for all four household types in Hawaii were more than 3 times the national average, ranging from

<sup>19</sup> The seven race groups used in this report were White alone; Black or African American alone; American Indian and Alaska Native alone; Asian alone; Native Hawaiian and Other Pacific Islander alone; Some other race alone; and Two or more races. If either spouse or partner was not in the same single race as the other spouse or partner, or if at least one spouse or partner was in a multiple-race group, then the couple was classified as an interracial couple (see Census 2000, PHC-T-19, *Hispanic Origin and Race of Coupled Households: 2000*, for detailed tabulations).

<sup>20</sup> Research has indicated that since unmarried-partner relationships often tend to be short-term or trial relationships, the partners may be less likely to choose partners with the same characteristics, such as race or ethnicity, than married couples. The higher proportions of mixed-race couples found among unmarried partners in Census 2000 than among married couples is consistent with this research. See Robert Schoen and Robin M. Weinick, "Partner Choice in Marriages and Cohabitations." *Journal of Marriage and Family*, Vol. 55, No. 2 (1993), pp. 408-414.

<sup>21</sup> For Census 2000 distributions of the population by Hispanic or Latino origin, see Betsy Guzman, *The Hispanic Population: 2000*. Census 2000 Brief, Series C2KBR/01-3. U.S. Census Bureau, Washington, DC, 2001.

<sup>22</sup> Since the race and Hispanic origin groups overlap, the combined percentages are always less than the sum of the individual percentages for each household type shown in Table 5.

Table 5.

### Selected Race and Hispanic Origin Characteristics of Married-Couple and Unmarried-Partner Households for the United States, Regions, States, and for Puerto Rico: 2000

(For information on confidentiality protection, nonsampling error, and definitions, see [www.census.gov/prod/cen2000/doc/sf1.pdf](http://www.census.gov/prod/cen2000/doc/sf1.pdf))

Area	Percent of households with partners of different races				Percent of households with only one partner of Hispanic origin				Percent of households with partners of different races or origins			
	Married-couple households	Unmarried-partner households			Married-couple households	Unmarried-partner households			Married-couple households	Unmarried-partner households		
		Opposite-sex partners	Same-sex partners			Opposite-sex partners	Same-sex partners			Opposite-sex partners	Same-sex partners	
		Male partners	Female partners		Male partners	Female partners			Male partners	Female partners		
<b>United States</b> . . . . .	5.7	12.2	11.5	10.0	3.1	6.4	6.9	5.4	7.4	15.0	15.3	12.6
<b>Region</b>												
Northeast . . . . .	4.3	10.3	10.7	8.5	2.1	5.2	5.9	4.3	5.7	12.8	14.2	10.8
Midwest . . . . .	3.5	9.4	8.2	7.4	1.7	4.0	3.8	3.0	4.5	11.2	10.3	8.9
South . . . . .	4.9	10.3	8.7	8.0	2.7	5.2	5.8	4.3	6.5	12.8	12.4	10.3
West . . . . .	10.6	19.3	17.7	15.7	6.1	11.2	11.1	9.2	13.7	23.7	23.2	19.7
<b>State</b>												
Alabama . . . . .	2.8	6.7	4.5	4.6	0.9	1.9	1.5	1.2	3.3	7.5	5.4	5.3
Alaska . . . . .	15.4	26.0	17.4	19.4	3.6	4.9	5.4	6.0	17.1	27.7	19.3	22.1
Arizona . . . . .	8.0	15.7	12.2	13.0	6.6	12.3	10.7	10.3	11.5	20.9	17.7	17.6
Arkansas . . . . .	3.6	8.4	6.1	6.5	1.2	2.7	2.1	1.8	4.2	9.6	7.0	7.4
California . . . . .	12.0	21.0	19.8	17.3	7.2	12.7	12.8	10.5	15.6	26.0	26.2	21.8
Colorado . . . . .	7.8	15.0	13.6	11.6	6.2	11.5	11.5	9.1	11.2	20.1	19.5	15.6
Connecticut . . . . .	4.2	11.8	8.4	8.1	2.3	6.6	5.2	3.9	5.7	14.6	11.6	10.2
Delaware . . . . .	4.1	10.5	9.8	7.1	1.7	3.9	4.0	3.5	5.1	12.2	12.5	9.0
District of Columbia . . . . .	7.8	10.4	16.0	13.3	2.9	3.9	9.4	4.1	9.6	12.6	22.5	15.0
Florida . . . . .	5.2	10.4	8.6	8.4	4.1	7.3	8.5	6.7	8.3	14.9	15.0	12.8
Georgia . . . . .	3.7	8.2	7.6	6.4	1.6	3.1	3.8	2.6	4.6	9.5	10.0	7.8
Hawaii . . . . .	34.7	55.6	43.8	40.9	6.2	12.6	7.9	8.9	36.1	57.6	46.1	42.3
Idaho . . . . .	5.3	11.0	8.0	8.1	3.0	6.7	4.9	5.4	6.8	13.8	10.4	10.2
Illinois . . . . .	4.3	10.0	11.0	8.6	2.6	5.7	6.7	4.3	5.8	12.6	14.7	10.8
Indiana . . . . .	2.9	8.2	5.8	6.0	1.5	3.4	2.5	2.3	3.8	9.7	7.4	7.1
Iowa . . . . .	2.3	7.7	5.5	6.4	1.2	3.6	2.2	2.7	3.0	9.2	6.8	8.0
Kansas . . . . .	5.4	14.5	8.4	9.2	2.8	6.9	3.7	4.2	6.8	17.1	10.2	11.1
Kentucky . . . . .	2.3	7.3	4.6	5.6	0.8	1.8	1.6	1.6	2.8	8.1	5.7	6.4
Louisiana . . . . .	3.3	7.2	6.5	5.2	1.8	2.9	3.7	2.9	4.5	8.8	8.8	6.9
Maine . . . . .	2.3	4.9	4.2	4.0	0.7	1.1	1.5	1.5	2.8	5.6	5.4	4.9
Maryland . . . . .	5.1	9.6	9.7	8.6	1.9	2.9	3.5	3.2	6.3	11.0	11.9	10.6
Massachusetts . . . . .	4.1	10.3	9.9	8.1	1.5	4.4	4.6	3.5	5.1	12.3	12.7	9.9
Michigan . . . . .	4.1	9.7	8.5	7.4	1.8	4.2	3.5	2.8	5.2	11.7	10.4	8.7
Minnesota . . . . .	3.4	10.6	9.1	8.0	1.2	3.3	3.4	2.6	4.1	12.0	10.8	8.9
Mississippi . . . . .	2.1	5.1	3.7	3.2	0.8	1.5	1.7	1.1	2.6	5.8	4.8	3.8
Missouri . . . . .	3.5	8.8	7.3	7.5	1.4	2.7	2.7	2.9	4.3	10.0	8.9	9.1
Montana . . . . .	5.3	11.2	8.8	8.4	1.9	4.3	4.0	3.3	6.4	13.3	11.6	10.5
Nebraska . . . . .	3.4	11.2	5.7	8.3	2.0	5.9	3.1	4.4	4.4	13.5	7.3	10.5
Nevada . . . . .	10.9	18.9	14.9	15.2	6.2	10.7	9.1	8.3	14.3	23.7	19.5	19.2
New Hampshire . . . . .	2.6	5.2	5.3	4.2	1.0	2.0	2.1	2.3	3.3	6.3	6.7	5.4
New Jersey . . . . .	5.1	12.0	11.2	8.8	3.1	7.5	6.6	5.2	7.2	15.8	14.9	11.7
New Mexico . . . . .	10.8	18.6	15.8	16.4	11.2	18.4	17.6	14.7	16.9	26.3	25.4	23.2
New York . . . . .	5.7	12.3	13.7	10.9	3.0	6.7	8.0	6.0	7.6	15.6	18.4	14.1
North Carolina . . . . .	3.6	9.6	6.9	6.5	1.4	3.0	2.1	2.2	4.3	10.7	8.0	7.5
North Dakota . . . . .	3.1	9.3	4.4	6.4	0.8	2.3	0.6	1.7	3.6	10.4	4.7	7.6
Ohio . . . . .	2.9	8.5	6.9	6.7	1.2	2.9	2.4	2.0	3.6	9.8	8.4	7.7
Oklahoma . . . . .	14.8	24.6	17.6	18.2	2.6	5.8	3.3	4.5	16.0	26.5	18.8	19.9
Oregon . . . . .	7.4	14.1	12.4	11.7	3.0	6.4	5.6	4.6	8.9	16.7	15.0	13.5
Pennsylvania . . . . .	2.4	7.5	7.1	5.6	1.1	3.2	3.1	2.2	3.1	8.9	8.8	6.8
Rhode Island . . . . .	4.4	11.1	9.0	8.0	1.5	4.3	3.9	2.8	5.2	13.0	10.6	9.6
South Carolina . . . . .	2.9	7.3	5.4	4.8	1.1	2.3	1.4	1.7	3.5	8.3	6.2	5.7
South Dakota . . . . .	3.6	10.9	5.7	7.3	1.0	2.8	1.8	0.9	4.1	12.1	6.7	7.6
Tennessee . . . . .	2.7	7.4	5.2	5.7	1.0	2.2	1.8	1.8	3.3	8.4	6.3	6.6
Texas . . . . .	6.8	14.1	11.5	10.7	5.4	11.2	10.7	8.0	9.8	19.0	17.4	14.6
Utah . . . . .	5.4	14.6	9.2	9.6	3.8	10.0	6.4	6.5	7.3	18.8	12.5	12.8
Vermont . . . . .	2.6	4.7	4.7	4.5	0.9	1.4	1.7	0.9	3.2	5.5	5.9	5.2
Virginia . . . . .	5.3	11.3	10.4	8.3	2.1	3.6	4.2	3.5	6.5	12.9	12.8	10.1
Washington . . . . .	9.2	17.3	14.8	13.6	3.2	6.6	5.9	5.4	10.8	19.8	17.6	16.1
West Virginia . . . . .	1.8	5.6	3.6	3.2	0.5	1.0	0.9	0.9	2.2	6.1	4.4	3.8
Wisconsin . . . . .	2.9	8.7	7.2	6.8	1.4	3.9	3.3	3.0	3.7	10.4	8.9	8.2
Wyoming . . . . .	5.3	10.8	7.5	7.6	4.0	8.7	5.6	5.8	7.4	14.9	10.7	10.9
<b>Puerto Rico</b> . . . . .	12.5	18.5	13.7	13.8	1.3	1.7	1.7	1.7	13.5	19.7	14.7	15.0

Source: U.S. Census Bureau, Census 2000, special tabulation from Summary File 1.

36 percent for married-couple households to 58 percent for opposite-sex partner households.

Overall, the western region of the United States exhibited the greatest diversity in couples' living arrangements. It had both the highest percentage of its coupled households composed of unmarried partners (Table 2) and also the highest percentage of either married-couple or unmarried-partner households with partners not of the same race or origin.

**Partners in opposite-sex unmarried-partner households are 12 years younger, on average, than partners in married-couple households.**

Living together is often a precursor to marriage among young couples in contemporary America.<sup>23</sup> Table 6 shows that the average ages of the partners in opposite-sex unmarried-partner households, many of whom will ultimately marry each other, were about 12 years younger than that of their married-couple counterparts.<sup>24</sup> Nationally, the average age of husbands was 49 years old, 2.4 years older than their wives. Opposite-sex partners, while younger, were

<sup>23</sup> For a discussion of the transition from cohabitation to marriage, see Wendy D. Manning and Pamela J. Smock, "Why Marry? Race and the Transition to Marriage Among Cohabitors," *Demography*, Vol. 32, No. 4 (November 1995), pp. 509-520; and Larry L. Bumpass and Hsien-Hen Lu, "Trends in Cohabitation and Implications for Children's Family Contexts in the United States," *Population Studies*, Vol. 54, No. 1 (March 2000), pp. 29-41.

<sup>24</sup> These averages refer only to those couples who are the householder and spouse or partner, and do not include those couples who may be in subfamilies or other living arrangements within the household.

only slightly closer in age—on average, male partners were 36.8 years old, 2.1 years older than their female partners.

Overall, married couples who lived in the Northeast were the oldest while those in the West were the youngest. Among the individual states, the oldest husbands and wives were in Florida (53 years and 50 years, respectively), while the youngest lived in Alaska and Utah (about 46 years and 43 years, respectively).

On average, the youngest opposite-sex partners lived in the Midwest. The Great Plains states of Kansas, Nebraska, South Dakota, and North Dakota, on average, tended to have both partners below 35 years of age. While the lowest average ages for both partners were in Utah (34 years for men and 32 years for women), Florida had the oldest opposite-sex partners (39 years and 37 years).<sup>25</sup>

The average age of same-sex partners was in their early forties, intermediate between that of married-couples and opposite-sex partners. In male unmarried-partner households, the householder was about 2 years older, while in female unmarried-partner households, the householder was slightly more than 1 year older. The average age of same-sex partners was lowest in the West and highest

<sup>25</sup> The ages of spouses and partners reflect the overall age composition of the population in each state. Utah had the youngest population in the United States in 2000, while Florida had the second oldest population. See Julie Meyer, *Age: 2000*. Census 2000 Brief, Series C2KBR/01-12. U.S. Census Bureau, Washington, DC, 2001.

in the Northeast for both types of households.

**FOR MORE INFORMATION**

Data on households and families from the Census 2000 Summary File 1 were released in 2001 and are available on the Internet via [factfinder.census.gov](http://factfinder.census.gov) and for purchase on DVD. One can also investigate household and family data from other Census Bureau surveys like the American Community Survey, the Current Population Survey, and the Survey of Income and Program Participation, and access recently released reports related to the topic, by going to [www.census.gov](http://www.census.gov).

For information on confidentiality protection, nonsampling error, and definitions, see [www.census.gov/prod/cen2000/doc/sf1.pdf](http://www.census.gov/prod/cen2000/doc/sf1.pdf) or contact our Customer Services Center at 301-763-INFO (4636).

Information on other population and housing topics is presented in the Census 2000 Brief Series, located on the U.S. Census Bureau's Web site at [www.census.gov/population/www/cen2000/briefs.html](http://www.census.gov/population/www/cen2000/briefs.html). This series presents information about race, Hispanic origin, age, sex, household type, housing tenure, and other social, economic, and housing characteristics.

For more information about Census 2000, including data products, call our Customer Services Center at 301-763-INFO (4636) or e-mail [webmaster@census.gov](mailto:webmaster@census.gov).



Table 6.  
**Average Age in Years of Householder and Partner in Married-Couple and Unmarried-Partner Households for the United States, Regions, States, and for Puerto Rico: 2000**

(For information on confidentiality protection, nonsampling error, and definitions, see [www.census.gov/prod/cen2000/doc/sf1.pdf](http://www.census.gov/prod/cen2000/doc/sf1.pdf))

Area	Married-couple households		Unmarried-partner households					
			Opposite-sex partners		Male partners		Female partners	
	Age of husband	Age of wife	Age of male partner	Age of female partner	Age of householder	Age of partner	Age of householder	Age of partner
<b>United States ...</b>	49.0	46.6	36.8	34.7	44.5	42.4	43.4	42.2
<b>Region</b>								
Northeast .....	50.0	47.5	37.8	35.5	45.2	43.3	44.3	43.2
Midwest .....	49.2	46.8	35.8	33.7	44.8	42.8	43.1	42.0
South .....	48.8	46.3	36.8	34.7	44.5	42.5	43.4	42.1
West .....	48.4	45.9	37.1	35.2	43.9	41.5	42.7	41.6
<b>State</b>								
Alabama .....	48.8	46.2	36.5	34.3	46.8	44.6	45.0	43.6
Alaska .....	45.5	43.0	36.9	34.6	43.9	41.7	40.8	39.9
Arizona .....	49.8	47.3	37.0	35.1	43.5	41.3	42.7	41.5
Arkansas .....	49.3	46.6	36.3	34.0	46.2	44.5	44.8	43.3
California .....	48.2	45.6	37.6	35.6	44.0	41.5	42.9	41.7
Colorado .....	47.4	45.2	35.5	33.7	41.9	39.9	41.3	40.2
Connecticut .....	50.1	47.7	37.6	35.5	45.7	44.0	44.4	43.5
Delaware .....	49.7	47.4	37.2	35.1	45.4	43.1	43.7	42.7
District of Columbia	50.8	48.0	38.6	36.2	42.4	39.8	42.4	41.3
Florida .....	52.5	49.6	39.2	36.9	46.1	44.0	45.1	43.8
Georgia .....	47.1	44.7	35.8	33.8	41.8	40.1	41.7	40.4
Hawaii .....	50.6	47.8	38.5	36.2	47.9	45.0	46.6	44.8
Idaho .....	48.1	45.6	36.1	34.0	46.4	43.9	43.5	42.4
Illinois .....	48.7	46.3	36.5	34.4	43.8	41.6	42.9	41.8
Indiana .....	48.7	46.4	35.5	33.4	44.5	42.4	42.4	41.3
Iowa .....	50.0	47.8	34.8	32.8	46.7	44.7	43.6	42.5
Kansas .....	48.8	46.6	34.5	32.5	44.4	42.4	42.8	41.6
Kentucky .....	48.1	45.6	35.9	33.6	45.7	43.6	43.8	42.3
Louisiana .....	48.5	45.9	36.7	34.2	45.5	43.1	44.2	42.5
Maine .....	50.2	47.8	37.2	34.8	46.4	44.9	43.5	42.7
Maryland .....	49.0	46.6	37.8	35.6	44.6	42.7	42.8	41.6
Massachusetts .....	49.7	47.4	37.3	35.2	44.4	42.7	43.4	42.6
Michigan .....	49.3	46.9	36.2	34.0	45.5	43.5	43.9	42.6
Minnesota .....	48.9	46.6	35.5	33.5	44.0	42.0	42.7	41.5
Mississippi .....	48.5	45.9	36.6	34.2	46.8	44.6	44.7	43.3
Missouri .....	49.4	47.0	36.1	33.9	45.2	43.3	42.6	41.5
Montana .....	50.2	47.5	36.4	34.1	46.2	44.1	45.2	44.1
Nebraska .....	49.2	47.0	34.6	32.6	45.7	43.5	44.1	43.0
Nevada .....	48.5	45.7	38.2	36.1	42.9	40.8	42.2	40.6
New Hampshire .....	49.0	46.7	37.3	35.1	45.2	43.8	43.7	42.6
New Jersey .....	49.6	47.1	38.7	36.4	45.3	43.5	44.5	43.3
New Mexico .....	49.2	46.7	36.3	34.4	45.2	42.9	43.8	42.8
New York .....	49.9	47.2	38.3	35.9	44.7	42.6	44.4	43.1
North Carolina .....	48.2	45.9	35.6	33.6	43.9	42.2	43.2	42.0
North Dakota .....	50.0	47.5	33.9	31.7	52.3	50.5	47.2	46.4
Ohio .....	49.4	47.1	35.8	33.7	45.2	43.3	43.5	42.3
Oklahoma .....	48.9	46.4	35.5	33.4	45.2	43.1	43.2	41.8
Oregon .....	49.6	47.1	36.9	34.9	44.9	42.5	42.5	41.7
Pennsylvania .....	50.6	48.3	37.3	35.0	46.8	44.9	45.2	44.0
Rhode Island .....	50.2	47.8	36.8	34.6	44.9	43.2	43.5	42.6
South Carolina .....	48.9	46.5	36.2	34.1	45.7	43.7	44.2	42.9
South Dakota .....	49.9	47.5	35.0	32.6	46.7	45.1	44.4	42.6
Tennessee .....	48.4	45.9	36.4	34.2	44.8	42.7	43.1	41.8
Texas .....	47.1	44.6	35.6	33.6	42.9	40.6	42.1	40.6
Utah .....	45.5	43.2	34.2	32.1	41.7	39.6	41.5	40.0
Vermont .....	49.9	47.4	37.4	35.0	45.7	43.9	43.8	43.1
Virginia .....	48.4	46.0	36.5	34.5	44.5	42.5	43.3	42.0
Washington .....	48.6	46.2	36.6	34.7	43.3	41.2	42.3	41.3
West Virginia .....	50.0	47.2	36.9	34.4	47.8	45.5	46.0	44.3
Wisconsin .....	49.5	47.2	35.6	33.5	44.7	43.0	42.8	42.0
Wyoming .....	49.0	46.5	36.4	34.1	48.2	45.6	44.1	42.9
<b>Puerto Rico .....</b>	48.2	45.1	40.9	38.5	47.4	45.4	47.4	45.6

Source: U.S. Census Bureau, Census 2000, special tabulation from Summary File 1.